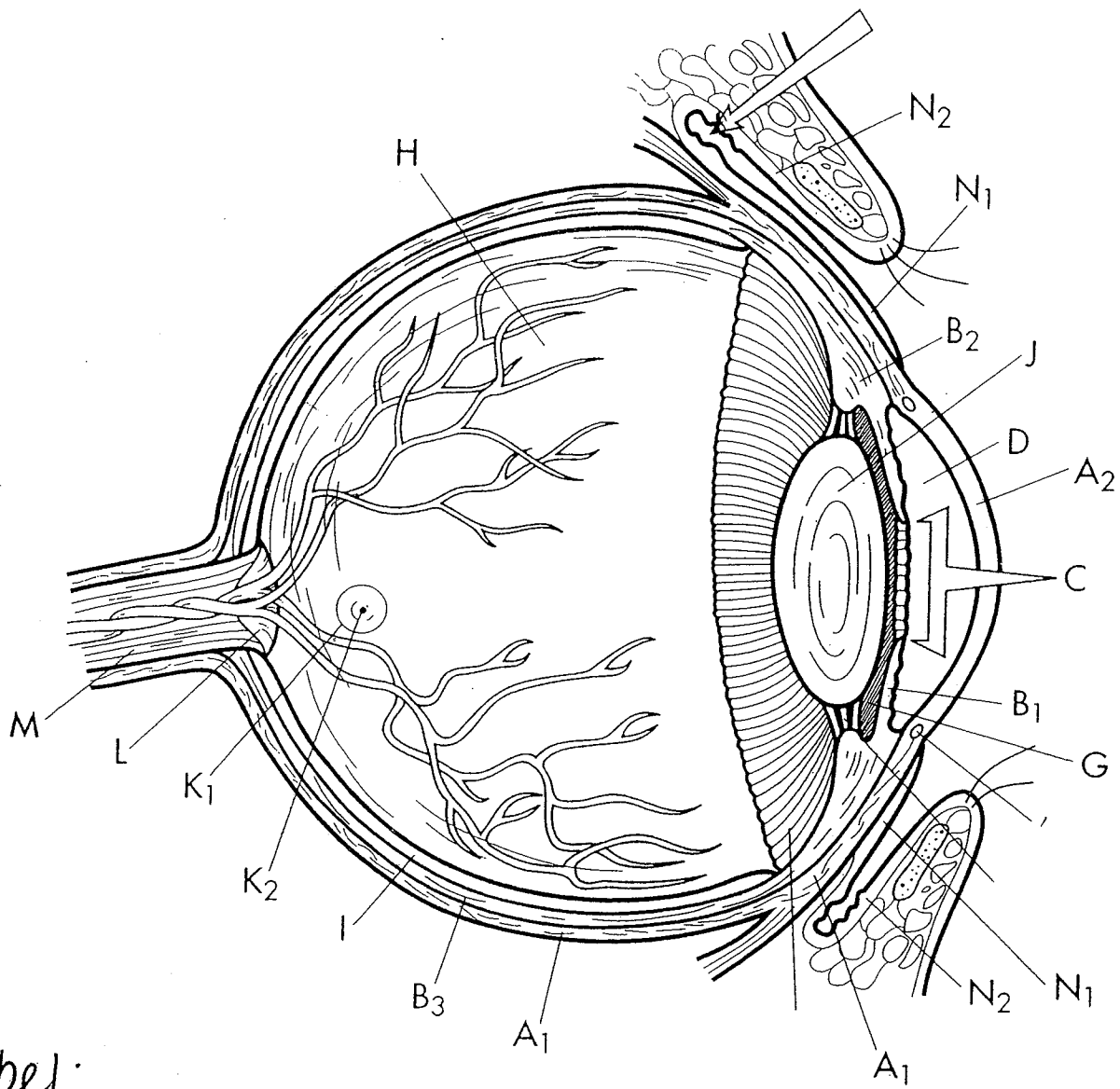


Name _____

ANATOMY OF THE EYE



Label:

- _____ A1 ○
- _____ A2 ○
- _____ B1 ○
- _____ B2 ○
- _____ B3 ○
- _____ C ○
- _____ D ○
- _____ G ○

- _____ H ○
- _____ I ○
- _____ J ○
- _____ K2 ○
- _____ L ○
- _____ M ○
- _____ N1 ○
- _____ N2 ○

EYE

PART A

Match the terms in column A with the descriptions in column B. Place the letter of your choice in the space provided.

Column A	Column B
A. aqueous humor	_____ 1. vascular tunic of eye
B. choroid coat	_____ 2. white of eye
C. ciliary muscle	_____ 3. transparent anterior portion of outer tunic
D. conjunctiva	_____ 4. inner lining of eyelid
E. cornea	_____ 5. secretes tears
F. iris	_____ 6. empties into nasal cavity
G. lacrimal gland	_____ 7. fills posterior cavity of eye
H. lysozyme	_____ 8. area where optic nerve originates
I. nasolacrimal duct	_____ 9. controls light intensity
J. optic disk	_____ 10. fills anterior chamber of eye
K. retina	_____ 11. contains visual receptors
L. sclera	_____ 12. connects lens to ciliary body
M. suspensory ligament	_____ 13. causes lens to change shape
N. vitreous humor	_____ 14. antibacterial agent in tears

Complete the following:

15. List the structures and fluids through which light passes as it travels from the cornea to the retina.

16. List three ways in which rods and cones differ.
