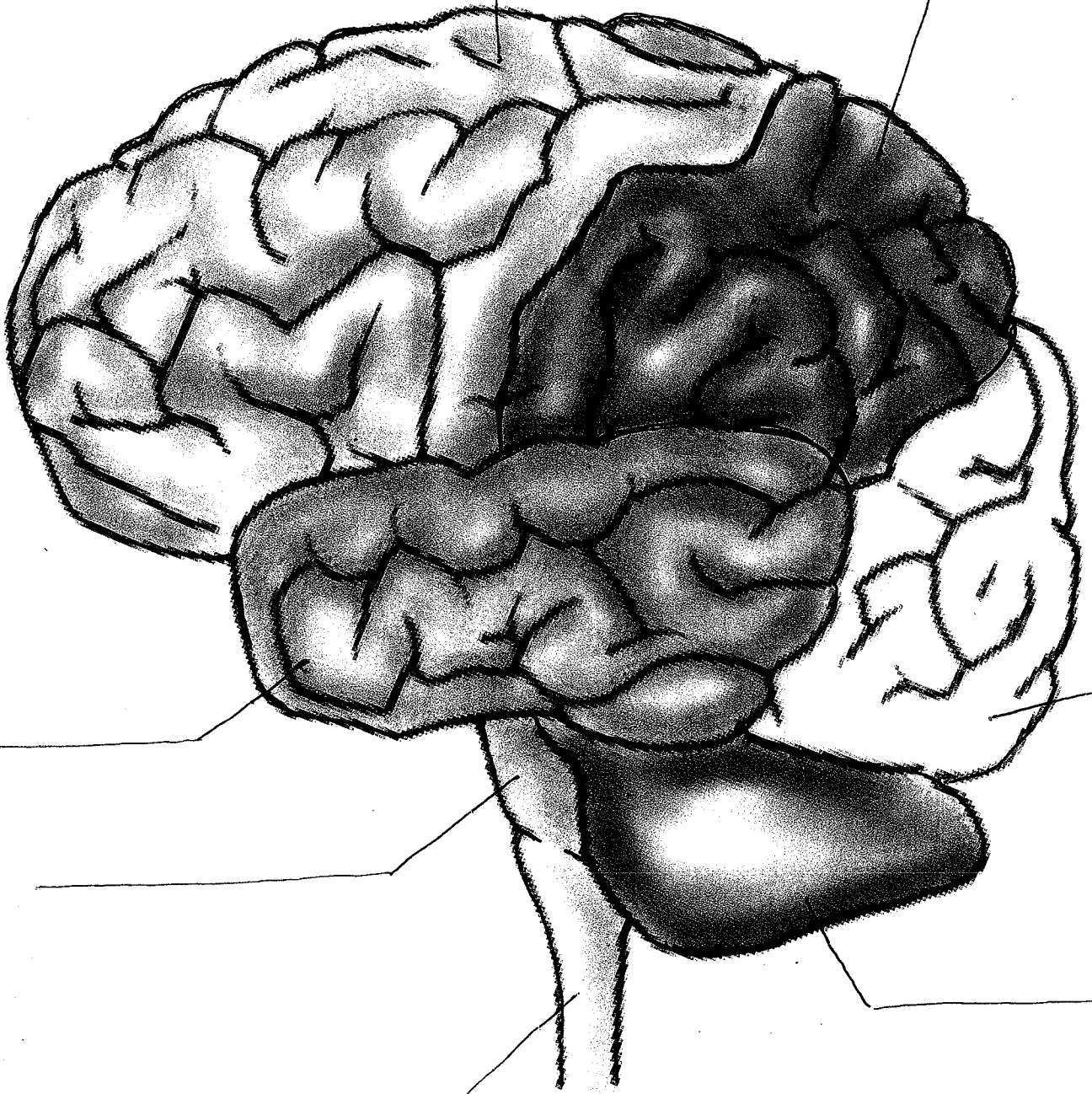
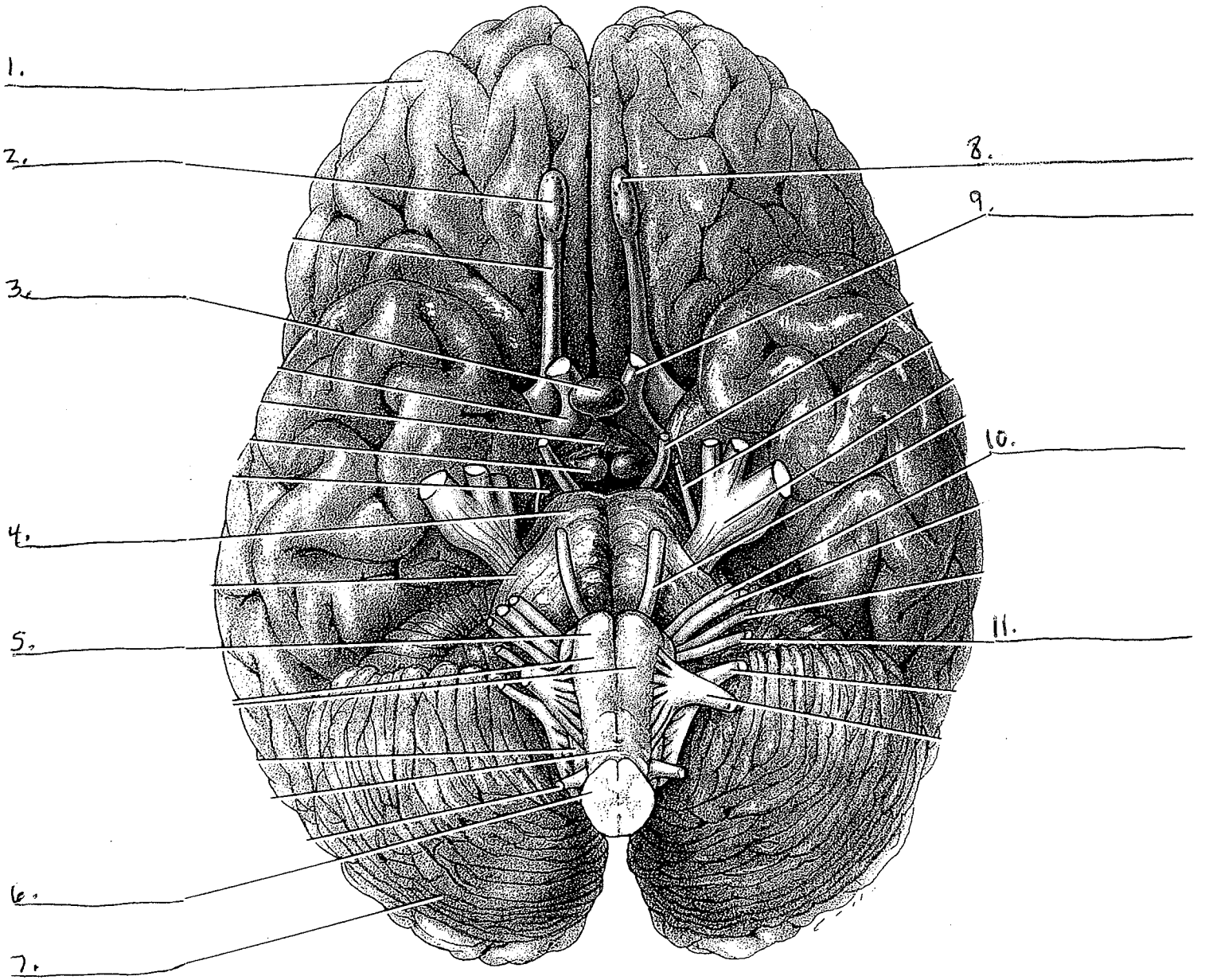


The Brain

- | | | |
|-------|--|---------------------|
| _____ | 1. Reasoning & planning (the seat of intelligence) | A) Frontal Lobe |
| _____ | 2. Damage – problems with memory, speech & language | B) Parietal Lobe |
| _____ | 3. Vision | C) Temporal Lobe |
| _____ | 4. Hearing, emotion & language (speech) | D) Occipital Lobe |
| _____ | 5. Personality & intelligence | E) Right Hemisphere |
| _____ | 6. Damage – problems with verbal memory, language & ability to control eye gaze | F) Left Hemisphere |
| _____ | 7. Vital functions (BP, HR & respiration) | G) Brain Stem |
| _____ | 8. Orientation (movement, posture & balance) | H) Limbic System |
| _____ | 9. Side focused on reasoning, math, science, spoken & written language | I) Cerebellum |
| _____ | 10. Damage – increased risk-taking, changes in socialization & sexual habits | J) Cerebrum |
| _____ | 11. Parts of speech, motor skills & problem-solving | |
| _____ | 12. Damage – difficulty recognizing objects, identifying colors & recognizing words | |
| _____ | 13. Side focused on music, art, spatial & pattern recognition (including facial recognition) | |
| _____ | 14. Recognition/perception of tactile stimuli, (such as pain, pressure) & touch | |
| _____ | 15. The “emotional brain” (connects memories to smells, etc.) | |



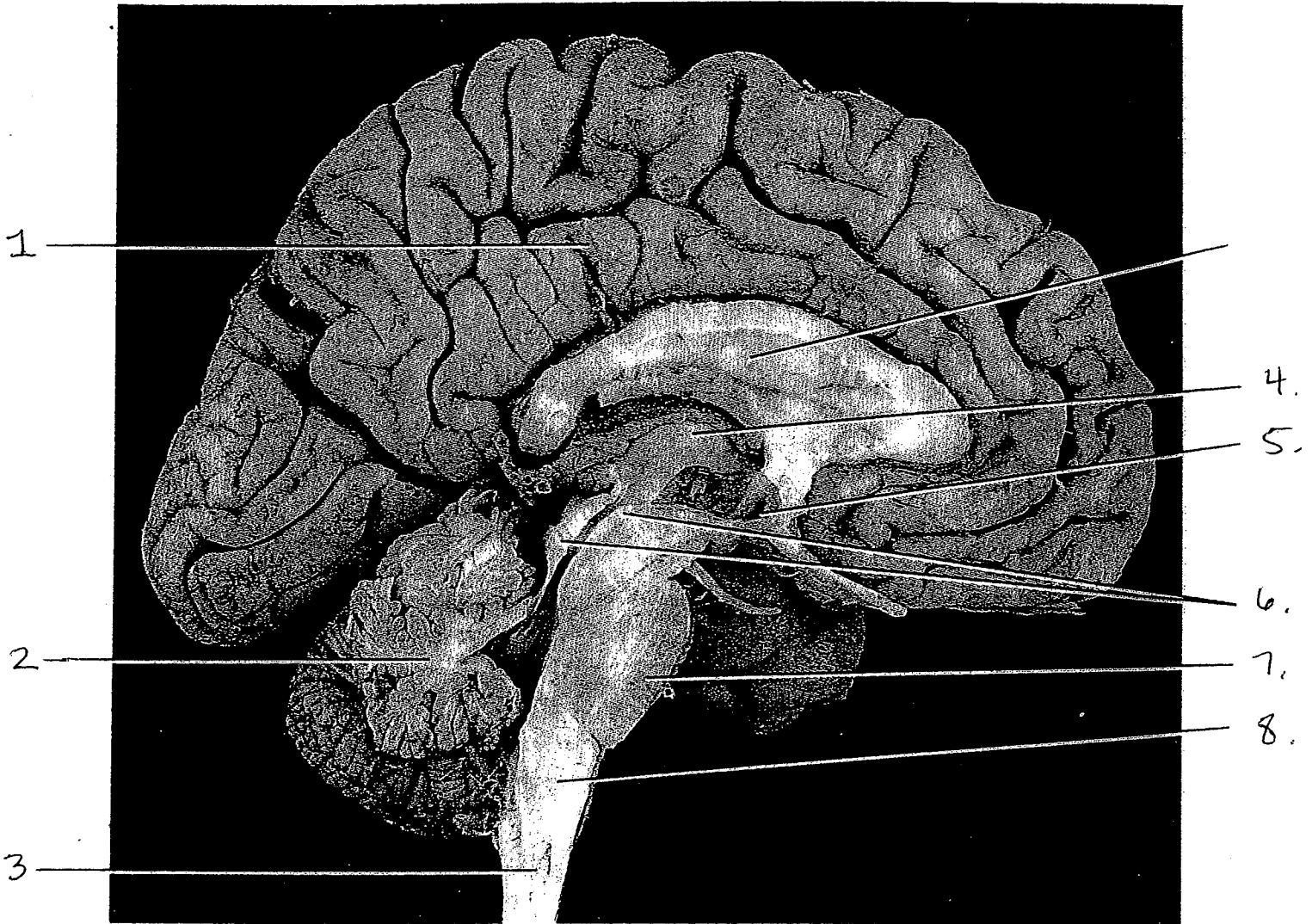
ANTERIOR



POSTERIOR

Inferior aspect of brain

SUPERIOR



INFERIOR

(b) Sagittal section, medial view

1.

2.

3.

4.

5.

6.

7.

8.

