

A&P Ch. 1 – Body Organization and Terminology

Part A – Match each body cavity to the organs it contains.

- | | |
|------------------|---------------------|
| _____ 1. liver | a. abdominal cavity |
| _____ 2. lungs | b. cranial cavity |
| _____ 3. spleen | c. pelvic cavity |
| _____ 4. stomach | d. spinal cavity |
| _____ 5. brain | e. thoracic cavity |
-
- _____ 6. trachea
 - _____ 7. gallbladder
 - _____ 8. small intestine
 - _____ 9. spinal cord
 - _____ 10. thymus gland
 - _____ 11. ovaries
 - _____ 12. heart
 - _____ 13. pituitary
 - _____ 14. bladder

Part B – Short answer.

1. Membrane that adheres to the surfaces of organs in the thoracic cavity is called _____.
2. Membrane that lines the walls of the thoracic cavity is called _____.
3. Membrane that adheres to the surface of organs in the abdominopelvic cavity is called _____.
4. Membrane that lines the walls of the abdominopelvic cavity is called _____.

Part C – Match each surgery to the body cavity in which it would occur.

- | | |
|---|---------------------|
| _____ 1. removal of the uterus | a. abdominal cavity |
| _____ 2. coronary bypass | b. spinal cavity |
| _____ 3. removal of a brain tumor | c. pelvic cavity |
| _____ 4. removal of a “hot” appendix | d. thoracic cavity |
| _____ 5. repairing a ruptured cervical disk | e. cranial cavity |

Part D – Match each body system with the general functions it provides.

- | | |
|--|-------------------------|
| _____ 1. secretes hormones | a. circulatory system |
| _____ 2. provides protective outer covering | b. digestive system |
| _____ 3. produces new organisms | c. endocrine system |
| _____ 4. stimulates muscles to contract | d. integumentary system |
| _____ 5. provides framework for soft tissues | e. lymphatic system |
| _____ 6. exchanges gases between air & blood | f. muscular system |
| _____ 7. produces blood cells | g. nervous system |
| _____ 8. transports excess fluid from tissues to blood | h. reproductive system |
| _____ 9. maintains posture | i. respiratory system |
| _____ 10. removes liquid waste from body | j. skeletal system |
| _____ 11. produces most body heat | k. urinary system |
| _____ 12. interprets information from sensory units | |
| _____ 13. converts food molecules into forms that are absorbed | |
| _____ 14. transports gases between lungs & body cells | |

Part E – Match each body system to the organs it contains.

- | | |
|------------------------------|---------------------------------|
| _____ 1. adrenal glands | a. circulatory system |
| _____ 2. arteries | b. digestive system |
| _____ 3. brain | c. endocrine system |
| _____ 4. gallbladder | d. integumentary system |
| _____ 5. heart | e. lymphatic system |
| _____ 6. kidneys | f. muscular system |
| _____ 7. larynx | g. nervous system |
| _____ 8. ligaments | h. reproductive system (female) |
| _____ 9. liver | i. reproductive system (male) |
| _____ 10. lungs | j. respiratory system |
| _____ 11. ovaries | k. skeletal system |
| _____ 12. pancreas | l. urinary system |
| _____ 13. parathyroid glands | |
| _____ 14. prostate | |
| _____ 15. uterus | |
| _____ 16. spleen | |
| _____ 17. spinal cord | |
| _____ 18. testes | |
| _____ 19. thymus | |
| _____ 20. trachea | |
| _____ 21. vagina | |
| _____ 22. salivary glands | |
| _____ 23. ureters | |
| _____ 24. skin | |

Part F – Match each body region with the corresponding body parts.

- | | |
|-----------------------------------|-----------------|
| _____ 1. abdomen | a. antebrachium |
| _____ 2. ribs | b. antecubital |
| _____ 3. reproductive organs | c. axillary |
| _____ 4. thigh | d. brachial |
| _____ 5. elbow | e. celiac |
| _____ 6. forehead | f. cephalic |
| _____ 7. buttocks | g. cervical |
| _____ 8. forearm | h. costal |
| _____ 9. back | i. crural |
| _____ 10. neck | j. cubital |
| _____ 11. upper arm | k. dorsum |
| _____ 12. leg | l. femoral |
| _____ 13. head | m. frontal |
| _____ 14. space in front of elbow | n. genital |
| _____ 15. armpit | o. gluteal |

Part G - Match each body region with the corresponding body parts/locations.

- | | |
|---|--------------|
| _____ 1. pelvis | a. buccal |
| _____ 2. breasts | b. inguinal |
| _____ 3. ear | c. lumbar |
| _____ 4. between anus & reproductive organs | d. mammary |
| _____ 5. sole | e. mental |
| _____ 6. middle of thorax | f. occipital |
| _____ 7. chest | g. otic |
| _____ 8. navel | h. palmar |
| _____ 9. chin | i. pectoral |
| _____ 10. behind knee | j. pedal |
| _____ 11. foot | k. pelvic |
| _____ 12. back of head | l. perineal |
| _____ 13. abdominal wall near thigh | m. plantar |
| _____ 14. loin | n. popliteal |
| _____ 15. palm | o. sternal |
| _____ 16. cheek | p. umbilical |

Part H – True or False. If false, correct the bold word.

1. The mouth is **superior** to the nose. _____
2. The stomach is **inferior** to the diaphragm. _____
3. The trachea is **anterior** to the spinal cord. _____
4. The larynx is **posterior** to the esophagus. _____
5. The heart is **medial** to the lungs. _____
6. The kidneys are **lateral** to the adrenal glands. _____
7. The hand is **proximal** to the elbow. _____
8. The knee is **proximal** to the ankle. _____
9. The epidermis is the **deep** layer of the skin. _____
10. Blood in **superficial** vessels gives color to the skin. _____

Part I – Complete the following statements using an anatomical term from the list.

anterior inferior medial dorsal posterior
superior distal lateral proximal ventral

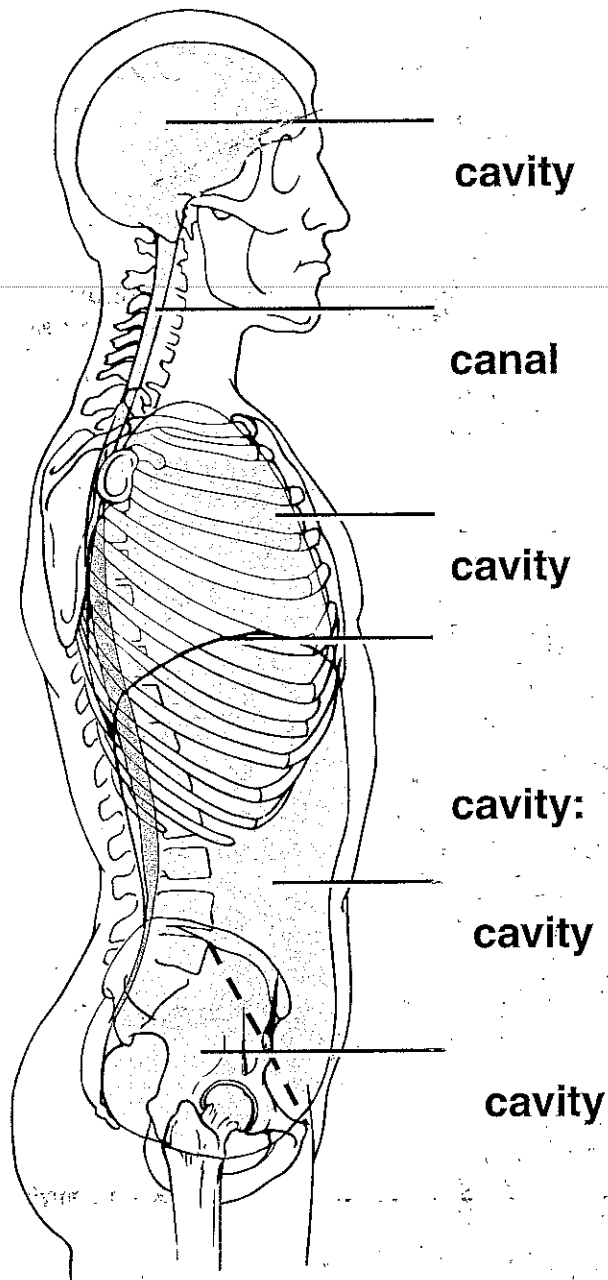
1. _____ The face and palms are on the (1) body surface,
2. _____ while the buttocks and shoulder blades are on the
3. _____ (2) body surface. The ears are (3) to the
4. _____ shoulders and (4) to the nose. The heart is (5)
5. _____ to the liver and (6) to the chin. The elbow is
6. _____ (7) to the fingers but (8) to the shoulder. The
7. _____ anterior surface can also be called the (9) surface
8. _____ and the posterior surface can also be called the (10)
9. _____ surface.
10. _____



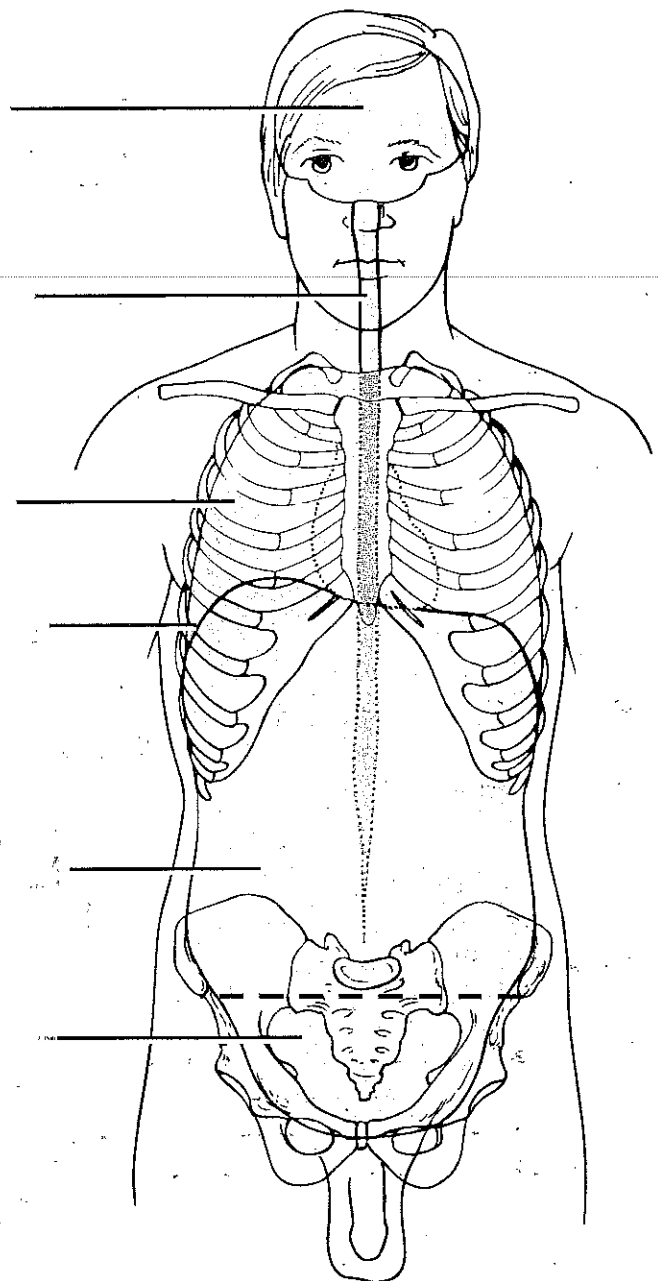
DORSAL BODY CAVITY



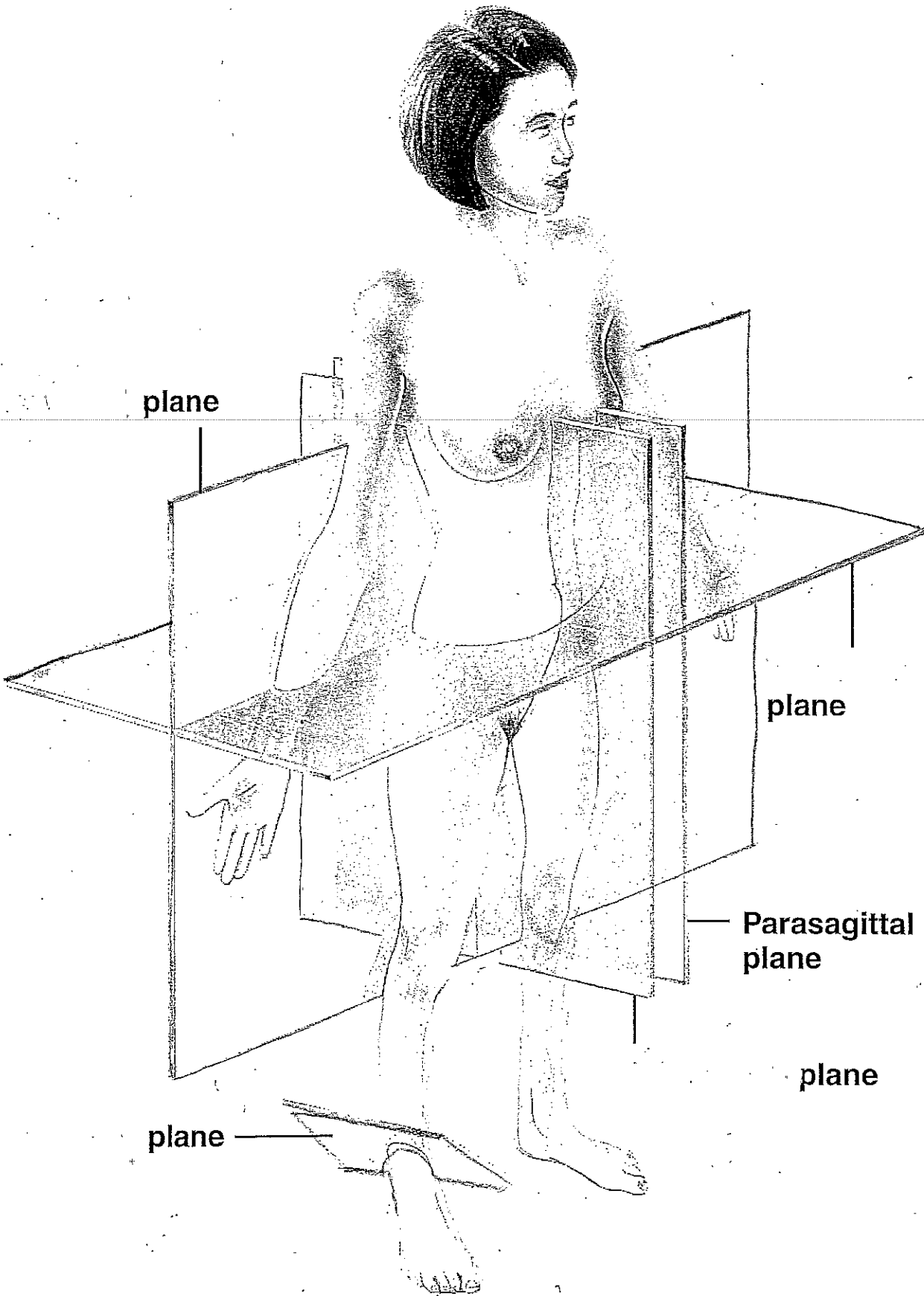
VENTRAL BODY CAVITY



(a) Right lateral view



(b) Anterior view



Right anterolateral view